

- Case Study: PrimePortal for Wealth Management
KBL – KBL Asset Management Portal

Seamless integration of external market data and internal information

Content-Logistics for KBL European Private Bankers

KBL European Private Bankers offers a goldmine of intelligence in estimation and recommendation financial advice.

Making this information available to their advisors all over Europe is critical to their mission of providing high-quality asset management services to all of their discerning customers. To give their asset managers and financial advisors access to the wide range of external and internal financial information they demand, KBL European Private Bankers brought in Interactive DataSM to develop a flexible and comprehensive financial information system. Based on Interactive Data's PrimePortal, the KBL European Private Bankers' Asset Management Portal is a multi-language, European intranet solution that seamlessly merges market information with internally produced content. The end result brings added value for advisors and investors in the form of refined, aggregated data.

Eric Zwickel from the Asset Management Division of KBL said: "We rely on PrimePortal because we trust the international focus of Interactive Data. The Content Store tool allows us the flexibility to deliver different types of content with the accuracy needed for controlled distribution of sensitive and critical data. Interactive Data's worldwide presence gave us confidence that they would implement an international solution to our satisfaction."

Customized for the needs of financial service providers

Content Store, Interactive Data's content logistics tool for the web, helps private banking networks administer and distribute a wide range of information across their organizations through an efficient, structured process. Developed specifically for financial service providers, the content management system enables authorized users to import their own content into the Asset Management Portal. KBL European Private Bankers' editorial group uses Content Store to distribute internal information quickly and reliably, using a web-based interface to rapidly enter,

Benefits of this web-based solution:

- Aggregation of market information and company internal content
- Controlled distribution of sensitive or critical data with user-based permissioning tool
- Automatic company and fund reports in PDF
- Application available in six languages for international organizations
- Direct links between research, fund management and private bankers for fast, efficient asset management

For further information about solutions and services for private banking, please visit www.interactivedata.com

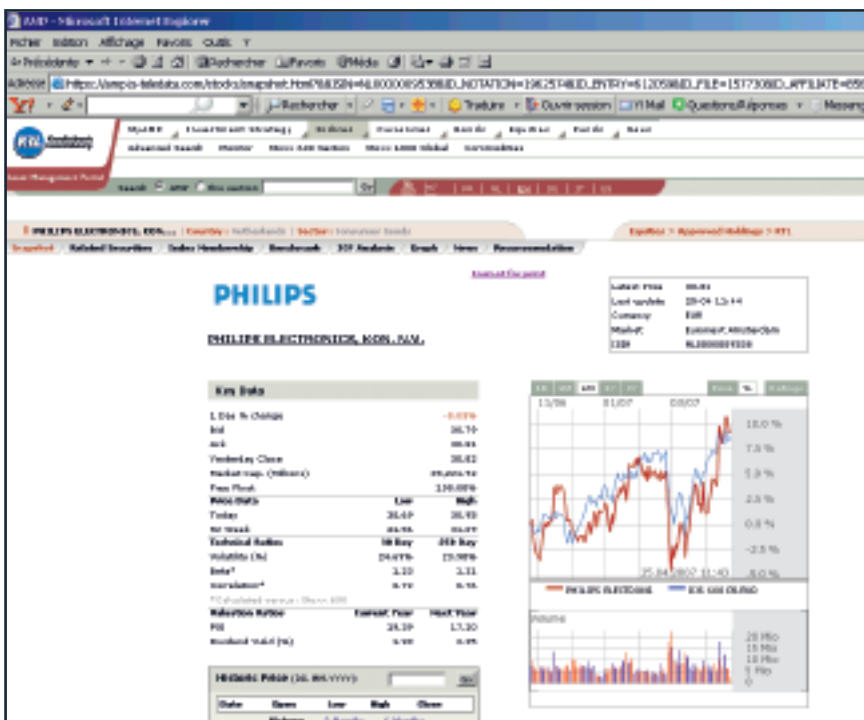


KBL European Private Bankers (KBL epb) is part of the KBC Group, a leading finance corporation in Europe. KBL epb is driving the further development of European private banking inside the KBC Group.

The private banking network is present in 8 European countries and manages about 60 billion Euro for its customers.

approve, and publish market commentaries and recommendations. External data is integrated automatically. KBL advisors and fund managers everywhere benefit from the comprehensive information aggregated to websites or rendered into PDF.

The KBL European Private Bankers Asset Management Portal offers different views and formats to optimize benefits for advisors and customers, and advanced portal features focus on key efficiencies. The transaction monitor hot-links portfolio managers and private bankers. Charts show KBL forecasts as trend channels. On-the-fly company reports in PDF format gather recent analyses, company profiles from third-party sources, and current market data. The integrated Daily Market View tracks current economic and company events. The tool also compares historical and current key figures with internal estimates to show unexpected developments.



Today, almost 500 employees across eight countries use the Asset Management Portal to access a shared pool of market data and internal information. The application, including the web-based editing and publishing interface, is available in six languages.

About Interactive Data Corporation

Interactive Data Corporation is a trusted leader in financial information. Thousands of financial institutions and active traders, as well as hundreds of software and service providers, subscribe to our fixed income evaluations, reference data, real-time market data, trading infrastructure services, fixed income analytics, desktop solutions and web-based solutions. Interactive Data's offerings support clients around the world with mission-critical functions, including portfolio valuation, regulatory compliance, risk management, electronic trading and wealth management. Interactive Data is headquartered in Bedford, Massachusetts and has over 2,400 employees in offices worldwide.

For more information, please visit www.interactivedata.com.

Interactive Data ■ www.interactivedata.com ■ info-ms@interactivedata.com

Interactive DataSM and the Interactive Data logo are service marks or trademarks of Interactive Data Corporation, and registered service marks in Australia, European Community, Germany, Japan, Korea, New Zealand, Switzerland, and Taiwan.

This document is provided for informational purposes only. The information contained in this document is subject to change without notice and does not constitute any form of warranty, representation, or undertaking. Nothing herein should in any way be deemed to alter the legal rights and obligations contained in agreements between Interactive Data Managed Solutions AG and its clients relating to any products or services described herein. Nothing herein is intended to constitute legal, tax or other professional advice. Interactive Data Managed Solutions AG makes no warranties whatsoever either express or implied, as to merchantability, fitness for a particular purpose, or any other matter. Without limiting the foregoing, Interactive Data Managed Solutions AG makes no representation or warranty that any data or information (including, but not limited to, evaluations) supplied to or by it are complete or free from errors, omissions, or defects.

Content Scope:

- Stock quotes, indices and funds
- Company profiles by FactSet, Compustat and Eurostockcity
- Internal information and analysis
- News and current market information

Product Modules in use:

- Streams Professional (Quotes, Charts, News, PDF)
- Equities Suite
- Funds Suite
- Interactive Charts
- Content Store