

FutureSource Workstation

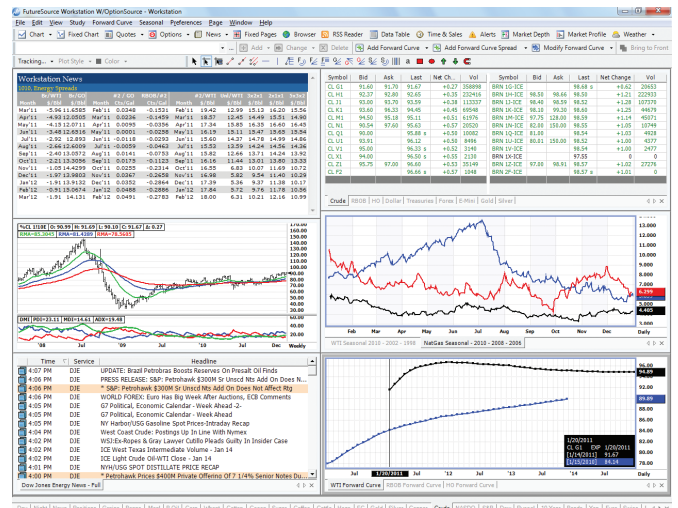
The preferred global market data and analytics platform for the energy, commodities and futures markets

FutureSource® Workstation is professional decision support software that delivers real-time, delayed and historical market data for futures, options, exchange-traded spreads, Forex, Treasuries (BGCantor Market Data) and equities to market participants.

FutureSource Workstation allows you to access and arrange information easily and quickly, so you can respond to opportunities efficiently.

Workstation Features

- **Quotes** — 150+ different price aspects, including option “Greeks” and implied volatilities
- **Charts** — Tick, Intraday, Daily, Weekly, Monthly, Continuation and Chartable Expressions with 60+ indicators and a complete set of drawing tools — up to 35 years of historical data; Seasonal Charts with overlays plus custom Forward Curves Charts
- **Options** — Customizable Options Board and a what-if calculator, as well as premium charting and advanced analytics via OptionSource
- **Market Depth** — Futures Market Depth displaying best bid and ask, including aggregated volume, for up to 10 levels for E-mini, CME/CBOT Globex, NYMEX, COMEX and Euronext contracts
- **Email** — Ability to easily email windows from FutureSource Workstation with a single mouse click
- **Time & Sales** — Customizable filters for the tabular display of real-time trade information; ability to export
- **Data Table** — Customizable tabular display of real-time and historical time series data; ability to export, including studies and expressions
- **Exchanges** — Access to more than 125 exchanges
- **RTD (DDE+) and Excel Plugin Toolbar** — Ability to update your portfolios, strip calculators and risk analysis in real time using Microsoft Excel; streaming quote grids and historic data tables can be created within Excel, using the RTD Excel Plugin Toolbar
- **Data Import** — Ability to bring in custom data sets and perform complete technical analysis, supporting Excel, CSV and Tab Delimited formats
- **Data Export** — Ability to bring a flat file of data points, including those from studies on a chart, into Excel to apply your proprietary analysis



With FutureSource Workstation, important market data is easy to access and view using intuitive features, such as tabbed pages, drag-and-drop technology and customized workspaces.

- **RSS Reader** — Easy organization and preview of additional news commentary alongside your charts and quotes
- **Alerts** — Price, time, news and completely customizable condition alerts
- **Weather Maps** — A comprehensive global set of static and animated radar weather maps
- **QuoTrek** — Quotes, charts and news on your PDA with no additional exchange fees — manage your mobile watch lists from within FutureSource Workstation

FutureSource Workstation is the platform of choice for many leading Energy and Ag companies around the world. Modularity allows for personalization with the data and other features as described previously, plus those uniquely suited to the Energy and Ag markets:

FutureSource Energy Workstation

- Comprehensive coverage of Platts Data, News and History
- DJ Energy News
- DJ News Plus Energy
- Pre-Configured Summer, Winter, Quarterly, Annual and Semi-Annual Strips

- Access to HDD, CDD and Wind Forecast
- NYMEX and ICE data, including ICE Implied Bids and Offers
- Cash Energy Prices via Dow Jones and SNL
- Amerex Power and Gas Daily Price Reports and History
- Critical Energy Inventory Statistics Reports from EIA and API

FutureSource Ag Workstation

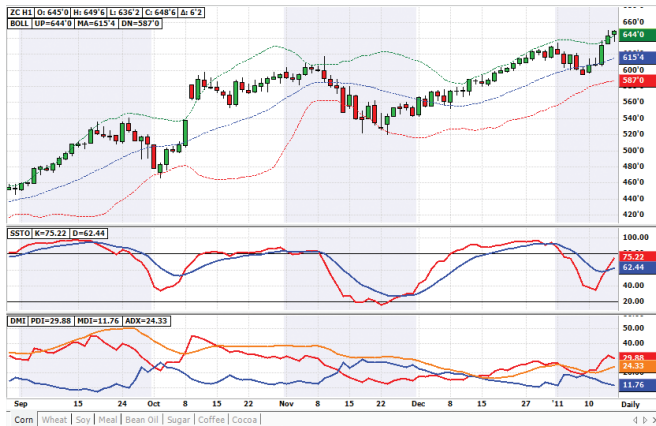
- DJ Agriwire News
- Access to Forecast, Precipitation and Soil Information, plus Real-Time Radar
- Fixed Price Page Library
- Chartable Pre-Configured Crush Spreads
- Access to All Major Commodity Exchanges Worldwide
- Easy Import of Proprietary Cash Grain Data for Chart Analysis

A Name You Can Trust

FutureSource Workstation provides the most comprehensive market data platform available to the futures markets, backed by highly skilled support and account management teams. FutureSource Workstation is used by many of the largest futures commodities merchants, energy and agri-business companies in the world.

One of the Most Sophisticated Networks

Backed by one of the most sophisticated market data infrastructures in the world, with geographically diverse data centers and multiple co-location facilities run in tandem, the real-time information provided in FutureSource Workstation is delivered no matter where



The advanced charts in FutureSource Workstation contain 60+ indicators and a comprehensive set of drawing tools. Other features include the ability to overlay symbols, split charts into multiple panes, chart exchange-traded and user-defined spreads.

you connect. All sites are staffed 7x24x365. In this way, users are always guaranteed state-of-the-art network performance and reliability. Private connectivity is offered through BT Radianz, Savvis and Verizon.

Discover the FutureSource Workstation Advantage

Call today to learn more about FutureSource Workstation. Or, visit www.FutureSourceWorkstation.com for more information.

Amsterdam ■ Bedford ■ Boston ■ Chicago ■ Cologne ■ Dubai ■ Dublin ■ Frankfurt ■ Geneva ■ Glasgow ■ Hayward ■ Helsinki ■ Hong Kong ■ Irvine ■ Jersey, CI ■ London ■ Luxembourg ■ Madrid ■ Melbourne ■ Milan ■ Minneapolis ■ New York ■ Paris ■ Rome ■ Santa Monica ■ Singapore ■ Sydney ■ Tokyo ■ Toronto ■ Zurich

United States

San Francisco: 800.466.9140 • 510.723.1765
 New York: 212.771.6970
 Chicago: 312.706.7771
 email: DesktopSolutions@interactivedata.com

Europe

London: +44 (0)20 7825 8701
 Paris: +33 (0)1 56 69 50 69
 Geneva: +41 22 748 70 40
 email: EuropeCorpSales@interactivedata.com

Asia/Pacific

Sydney: 800 089 275 • +61 2 8668 1600
 email: aus-sales@interactivedata.com
 Singapore: +65 6590 8640
 email: sgp-sales@interactivedata.com

Limitations

This document is provided for informational purposes only. The information contained in this document is subject to change without notice and does not constitute any form of warranty, representation or undertaking. Nothing herein should in any way be deemed to alter the legal rights and obligations contained in agreements between Interactive Data and its clients relating to any products or services described herein. Nothing herein is intended to constitute investment, legal, tax or other professional advice. Interactive Data makes no warranties whatsoever, either express or implied, as to merchantability, fitness for a particular purpose, or any other matter. Without limiting the foregoing, Interactive Data makes no representation or warranty that any data or information (including, but not limited to, evaluations) supplied to or by it is complete or free from errors, omissions or defects. Products, services or company names mentioned herein are the property of, and may be the service marks or trademarks of, their respective owners.

© 2011 Interactive Data

FutureSource® is a registered service mark of Interactive Data Corporation. Interactive Data™ and the Interactive Data logo are trademarks and/or service marks or registered trademarks and/or service marks of Interactive Data Corporation in the United States and/or other countries.

Interactive Data Desktop Solutions (Europe) Limited, a company regulated in the UK by the Financial Services Authority. Interactive Data Desktop Solutions is a service of Interactive Data (Australia) Pty Ltd provided under AFSL Licence No. 234689. 120611

