

# PrimeTerminal

Professional Edition

The Customisable  
Financial Market Terminal



# Enhance Advice with PrimeTerminal

Today's clients are more discerning and have greater expectations of their wealth manager than ever before. Having the right information systems is crucial to helping financial advisors and asset managers provide efficient and high-quality customer advice. A customisable terminal is an ideal solution.

With the growing number and complexity of instruments in today's market, investors expect advisors to do more than just provide quotes and market overviews. Your customers require support with global investment strategies and rely on you to provide expert advice. And while you strive to provide that, being as efficient as possible is also important.

Timely financial market information, solution-centric search and analysis functions as well as comprehensive market news are indispensable. But a financial terminal that supports your particular advisory process will give you the ultimate edge. Private banks, investment banks and asset managers each have unique requirements. PrimeTerminal, the dynamic, fully customisable terminal from Interactive Data Managed Solutions can be customised to help meet your specific needs. PrimeTerminal can be tailored to fit your content and functionality requirements, and can be

mapped to your workflow process. PrimeTerminal is a robust and sophisticated solution designed to help investment professionals like you do what you do best - provide your clients with intelligent, insightful advice and the highest level of service.

## A Customisable Solution

PrimeTerminal is available in various customisable editions and country-specific versions in order to meet your specific needs.

PrimeTerminal lets you design your workspace with storable screens and watchlists, and exchange screen views with your colleagues. The terminal is available in various languages, and internationally utilised screens can be displayed with the respective customised user interface and language versions.



PrimeTerminal offers market- and asset class-specific predefined screens that can be customised to track users' workflow processes.

### PrimeTerminal Enhances Efficiency

PrimeTerminal features an intuitive, convenient, user-friendly interface that requires only minimal training. Real-time data, charts, analyses, news, company profiles, fundamentals and balance sheet data or analyst recommendations are directly linked to the corresponding securities, providing you with a convenient, comprehensive overview within a single window. Processes such as searches for warrants associated with a specific underlying are also supported. Whether the content is provided by Interactive Data, a third-party or is proprietary to your firm, it can be seamlessly intergrated with other data on the corresponding securities.

### Comprehensive, Real-time Market Data

PrimeTerminal offers you the full scope of the Interactive Data Managed Solutions' content universe.

The broad data spectrum includes:

- Global, real-time quote data, Level 2 and historical data
- Global indices, index constituents and benchmarks
- Comprehensive reference data
- Over-the-counter money market and capital market data
- Company profiles
- Fundamental and research data, including balance sheet data and analyst recommendations
- Risk figures and analyst recommendations
- Performance, outperformance and risk indicator comparisons with freely selectable benchmarks

The calculation servers hosted by Interactive Data Managed Solutions provide fast and reliable figure calculations.



PrimeTerminal supports your workflow processes.

### Analytical and Monitoring Tools

Valuable tools for technical and mathematical financial analysis and monitoring of the various asset classes supplement comprehensive market information.

- Charts analysis
- Options analysis and simulation
- Warrants analysis and simulation
- Real-time and historical currency conversion tool
- Savings plan calculator
- Alerting
- Advanced capabilities to export data to MICROSOFT® OFFICE EXCEL

## Quickly Find the Right Investment

PrimeTerminal offers efficient and intuitive process-oriented search functions and fault-tolerant searches across all asset classes. For example, a customer may call you, wanting to make a short-term investment. You recommend a certificate on an index stock.

- 1. You start by entering "IBM" using the keyword search.



- 2. PrimeTerminal conducts an extensive search across all asset classes, retrieves and immediately sorts all results. In addition to financial instruments, an asset class-specific grid displays real-time information, master data and calculated data. Moreover, you can get an arbitrage view for each instrument which displays all prices and quotes, providing you with an instant market overview and the ability to quickly switch between different asset classes for less specific investor questions. You then jump to the tab displaying the certificates associated with the IBM underlying. The certificate type shows that there are discount certificates for this underlying. You change directly to the certificates screener to narrow down your selection.

All	Name	Type	Exchange
	BARRIER REVERSE CONVERTIBLE (MULTI ASSET)	Reverse Convertible - Mu.	Swiss Exchange
	BARRIER REVERSE CONVERTIBLE (MULTI ASSET)	Reverse Convertible - Mu.	Swiss Exchange
	BARRIER REVERSE CONVERTIBLE (MULTI ASSET)	Reverse Convertible - Mu.	Swiss Exchange
	BONUS-CERTIFICATE ON INTERNATIONAL BUS MACH CO...	Bonus - Full Time Barrier	Stuttgart
	BONUS-CERTIFICATE ON INTERNATIONAL BUS MACH CO...	Bonus - Full Time Barrier	Stuttgart
	BONUS-CERTIFICATE ON INTERNATIONAL BUS MACH CO...	Bonus - Full Time Barrier	Stuttgart
	C PERFORM CALL ON INTERNATIONAL BUS MACH CORP...	Knock-Out - Classic	Euronext Paris
	C PERFORM CALL ON INTERNATIONAL BUS MACH CORP...	Knock-Out - Classic	Euronext Paris
	C PERFORM CALL ON INTERNATIONAL BUS MACH CORP...	Knock-Out - Classic	Euronext Paris
	C PERFORM PUT ON INTERNATIONAL BUS MACH CORP...	Knock-Out - Classic	Euronext Paris
	C PERFORM PUT ON INTERNATIONAL BUS MACH CORP...	Knock-Out - Classic	Euronext Paris
	C PERFORM PUT ON INTERNATIONAL BUS MACH CORP...	Knock-Out - Classic	Euronext Paris
	C PERFORM PUT ON INTERNATIONAL BUS MACH CORP...	Knock-Out - Classic	Euronext Paris
	DISCOUNT-CERTIFICATE ON INTERNATIONAL BUS MACH...	Discount - Classic	over the counter Germ.
	DISCOUNT-CERTIFICATE ON INTERNATIONAL BUS MACH...	Discount - Classic	over the counter Germ.

- 3. The certificates screener lets you narrow down the selection. To gain a quicker overview of the displayed results, the table can be sorted by maturity and maturity in three month.

Criteria	Condition	Value	Format
Sideways yield p.a.	>=	10%	(25%)

Sort by	Sort order
Sideways yield p.a.	Descending

All	Sidew...	Name	Exchange	Contributor	Bid	Ask	Last	Volu
	14,19%	DISCOUNT-CERTIFICATE ON INTERNAT..	over the counter Germ..	OPPF	62,47	62,67	62,62	
	13,59%	DISCOUNT-CERTIFICATE ON INTERNAT..	over the counter Germ..	OPPF	74,98	75,08	75,03	
	13,16%	DISCOUNT-CERTIFICATE ON INTERNAT..	over the counter Germ..	OPPF	69,98	60,08	60,03	
	12,19%	DISCOUNT-CERTIFICATE ON INTERNAT..	over the counter Germ..	OPPF	67,49	67,69	67,64	

In just three easy search steps, PrimeTerminal has enabled the advisor to retrieve a selection of discount certificates that satisfies the investor's requirements.



## While working with your customers, PrimeTerminal lets you easily access any relevant information:

- Instruments can be specifically retrieved by WKN, ISIN, ticker symbol, etc.
- During the financial advisory and sales process, the search function lets you conveniently refine the results per asset class.
- Keyword-based searches offer immediate, comprehensive results sorted by asset class.
- Fault-tolerant search algorithms automatically provide assistance in the case of typing errors.

## Fully Integrated News

PrimeTerminal links market news and securities:

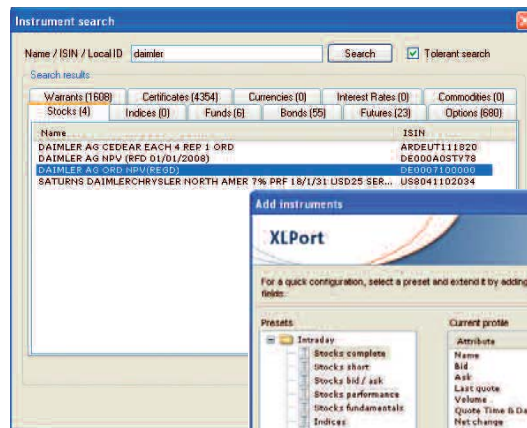
- Fast headline and full-text searches retrieve current and historical news from a large number of sources.
- Alerting functionality for each instrument immediately spotlights current price developments.
- Fault-tolerant search algorithms automatically provide assistance in the case of typing errors.
- During the financial advisory and sales process, the search function lets you conveniently refine the results per asset class.

Headline Search	Time	Source
DJ White Nile Ld Sudan Update	17:18:25 / 14.06.07	DJN
White Nile Ld - Sudan Update	17:18:23 / 14.06.07	AFX NEWS LTD.
Amplifon: acquistate 280.000 azioni proprie	17:17:47 / 14.06.07	DJN
RADIOCOR: 0001 IN BORSA	17:17:40 / 14.06.07	AFX NEWS LTD.
DJ Sudan Has Government Total S/W Right To S Sudan Block	17:17:35 / 14.06.07	DJN
DJ=THE SKEPTIC: FDA Weighs In On Sanofi	17:16:32 / 14.06.07	DJN
DJ=Financiele agenda tot en met vrijdag 22 juni	17:16:21 / 14.06.07	DJN
DJ=Zalm: aandeelhouder is belangrijkste stakeholder bij bedrijf	17:16:09 / 14.06.07	DJN
DJ=FDA CEO Sees Progress On US-Europe Regulatory Convergence	17:15:48 / 14.06.07	DJN
DJ Israel's Gazit Purchases 12% Of Ormat For \$95.8 Million	17:15:35 / 14.06.07	PR NEWSWIRE
A shadow director and his front man are disqualified for a total of 14 years	17:14:51 / 14.06.07	DJN
DJ Shire: Elaprase Gets Health Canada Approval	17:14:41 / 14.06.07	DJN
DJ Sanofi MSD attend ventes 07 de EUR995mlns grâce à Gardasil -2	17:14:31 / 14.06.07	DJN
UK DFT says not referring Admiral Taverns buy of 869 Punch Taverns pubs	17:14:26 / 14.06.07	AFX NEWS LTD.
DJ=UK Watchdog Gives Initial Go-Ahead To Novartis's Lucentis	17:13:43 / 14.06.07	DJN
Invesco Perp AIM VCT - Net Asset Value(s)	17:13:28 / 14.06.07	AFX NEWS LTD.
DJ Invesco Perp AIM VCT Net Asset Value(s)	17:13:24 / 14.06.07	DJN
DJ=Arbitrage Spreads On Pending Merges & Acquisitions -6-	17:12:56 / 14.06.07	DJN
PRESS RELEASE: S&P Bulletin: No Impact Block Sanofi-aventis	17:12:54 / 14.06.07	DJN

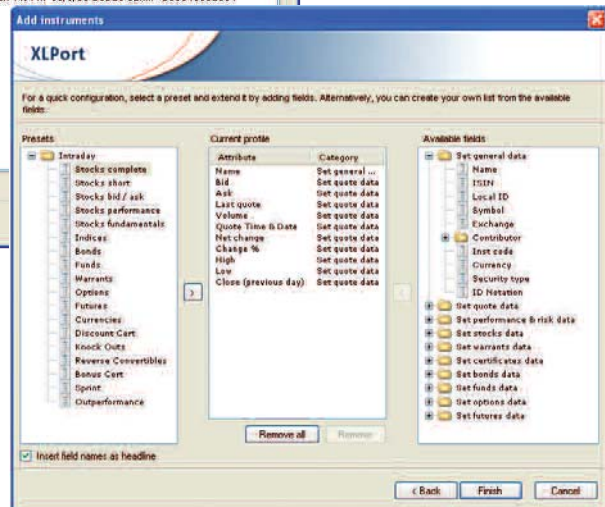
Global news in various languages.

## Convenient Data Export

To compile information for your customers, quickly and easily document financial advisory and sales processes, PrimeTerminal lets you conveniently export data to MICROSOFT® OFFICE EXCEL, POWER-POINT or WORD. Data export to MICROSOFT® OFFICE EXCEL is handled via DDE and our XLPort add-in. XLPort facilitates flexible, fast exporting and real-time processing of even large data volumes. Dynamic cell referencing lets you monitor and manage large dynamic portfolios, quote lists, calculators and scenario analyses in MICROSOFT® OFFICE EXCEL. Data wizards simplify usage and allow you to search across all asset classes. XLPort is especially geared to the needs of wealth managers and asset managers who want to manage various, extensive portfolios and assess them in real-time mode.



XLPort wizards help to export large data volumes.





## A Managed Solution

As a platform-independent, web-based Java application, PrimeTerminal is easy to use and operate. Updates are automatic, and user-specific entitlement enables firms to control data costs.

### Installation and Operation

PrimeTerminal can be rapidly deployed, allowing users to be fully functional in a timely manner. The Java application is used via an Internet connection or via an intranet and direct line to Interactive Data Managed Solutions. Standard architectures such as Windows Terminal Server and Citrix as well as BT Global Financial Services' Radianz network are supported and keep the total cost of ownership low.

PrimeTerminal is easy to install and operate. It is available as either a hosted or deployed solution. Users receive PrimeTerminal updates automatically via Webstart.

### User-specific Entitlement and Billing

PrimeTerminal allows you to control the costs per user, and is an on-demand, customisable supplier of data and functionality.

### PrimeTerminal is Available as a Hosted or Deployed Solution.

	Hosted	Deployed
<b>Location</b>	Interactive Data Managed Solutions data centre	Data centers of Interactive Data Managed Solutions and the client
<b>Object Server</b>		
<b>Network</b>	The data is retrieved via Internet and shared back-end servers in Interactive Data Managed Solutions' data center	The application servers of the customer are linked to Interactive Data Managed Solutions' data center via direct line. PrimeTerminal is accessed via the client network.

### Service and Support

Interactive Data Managed Solutions can deliver an array of services to PrimeTerminal clients.

#### Basic Services

**Entitlement and Reporting Services:** Entitlement and reporting services support in user-specific permissioning and reporting tasks. Interfaces to standard third-party cost controlling solutions are available.

**Support Services:** PrimeTerminal customers can have access to multi-language customer support. The web-based Starboard Ticket System lets the customer view all current inquiries at a glance.

#### Optional Services

**Customer Training Services:** PrimeTerminal is intuitive and easy to use, requiring only a very short training time. Upon request, end user and train-the-trainer courses can also be conducted on-site.

**Consulting Services:** Interactive Data Managed Solutions provides specialised consulting services for deployment and projects involving the customisation of PrimeTerminal.

# PrimeTerminal Benefits

PrimeTerminal is a highly customisable solution engineered to support the needs and workflow requirements of financial advisors, private wealth managers and asset managers. With its individual workflow support and convenient user interface, PrimeTerminal can increase the efficiency, productivity and service quality of financial market professionals.

## Workflow Processes

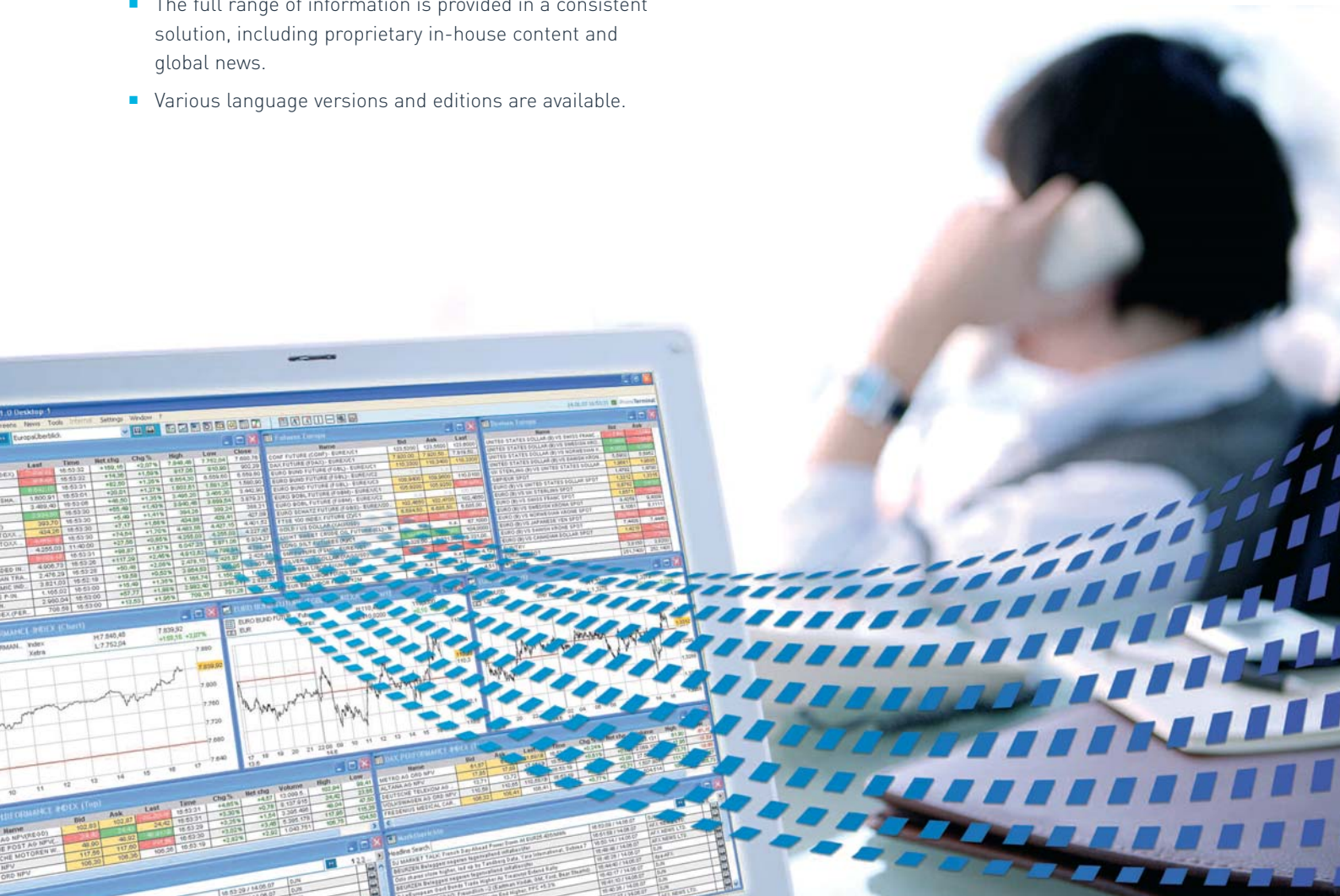
- PrimeTerminal provides quick and reliable access to any required information to support you as you work with your clients.
- You can tailor PrimeTerminal to suit your needs, use different screen views simultaneously and exchange them with your colleagues.
- Context-sensitive menus facilitate your work.
- Fault-tolerant, process-oriented searches can be conducted across all asset classes.

## Utilisation and Operation

- Individual user permissioning lets you dynamically and flexibly assign billable data and functions so that you only pay for what you actually need.
- As a managed solution, PrimeTerminal is easy to operate and maintain.
- Services and support offerings augment your personal financial terminal.
- Central storage of screens and settings allows for flexible and mobile use

## Content and Functionality

- Having access to relevant information and analytical tools helps you make well-founded decisions.
- The full range of information is provided in a consistent solution, including proprietary in-house content and global news.
- Various language versions and editions are available.



## About Interactive Data

Interactive Data Corporation (NYSE: IDC) is a leading global provider of financial market data, analytics and related solutions to financial institutions, active traders and individual investors. Interactive Data, headquartered in Bedford, Mass., has approximately 2,400 employees in offices located throughout North America, Europe, Asia and Australia.

Interactive Data's Managed Solutions business is a leading provider and operator of customized financial information systems. The group builds and manages Web-based financial market data portals and terminals for a range of organizations worldwide, from retail and investment banks to asset managers, online brokers, stock exchanges and media portals. By aggregating a broad set of financial data and client-proprietary content and offering visually stunning features such as charts, sophisticated search functions, decision-support tools and analytics, these intuitive applications can help customers optimize their business processes and realize efficiencies. This group is managed as part of the Interactive Data's Real-Time Services business, which provides a comprehensive suite of offerings that includes PlusFeed<sup>SM</sup>, a consolidated, low-latency digital datafeed.

For more information about Interactive Data Corporation and its businesses, please visit [www.interactivedata.com](http://www.interactivedata.com).

Amsterdam ■ Bedford ■ Boston ■ Chicago ■ Cologne ■ Dublin ■ Fort Lauderdale ■ Frankfurt ■ Geneva ■ Glasgow ■ Helsinki ■ Hong Kong ■ Houston ■ Jersey, CI ■ London ■ Los Angeles ■ Luxembourg ■ Madrid ■ Melbourne ■ Milan ■ New York ■ Paris ■ Rome ■ San Francisco ■ Santa Monica ■ Singapore ■ Sydney ■ Tokyo ■ Zurich

### Frankfurt

Sandweg 94  
60316 Frankfurt/Main  
Germany  
Tel: +49 (0)69 50 50 30 0  
Fax: +49 (0)69 50 50 30 505

### Helsinki

Luotsikatu 13  
00160 Helsinki  
Finland  
Tel: +358(0)9 6860 6717  
Fax: +358(0)9 6860 6710

### London

Fitzroy House, 13-17 Epworth Street  
London EC2A 4DL  
United Kingdom  
Tel: +44 (0)20 7825 8000  
Fax: +44 (0)20 7825 7701

### Madrid

C/ María de Molina 37 bis  
28006 Madrid  
Spain  
Tel: +34 (91)74 52 105  
Fax: +34 (91)74 52 106

### Milan

Via Mauro Macchi, 44  
20124 Milan  
Italy  
Tel: +39 02 671915 1  
Fax: +39 02 671915 40

### New York

100 William Street, 17th Floor  
New York, NY 10038  
United States of America  
Tel: +1 212 269 6300  
Fax: +1 212 771 6987

### Paris

9, Rue de Téhéran  
75008 Paris  
France  
Tel: +33 (0)1 56 69 50 70  
Fax: +33 (0)1 56 69 50 79

### Zurich

Loewenstrasse 2  
8001 Zurich  
Switzerland  
Tel: +41 (0)44 276 46 11  
Fax: +41 (0)44 276 46 01

Interactive Data Managed Solutions ■ [www.interactivedata-ms.com](http://www.interactivedata-ms.com) ■ [info-ms@interactivedata.com](mailto:info-ms@interactivedata.com)

Interactive Data<sup>SM</sup> and the Interactive Data logo are service marks of Interactive Data Corporation.

## Limitations

This document is provided for informational purposes only. The information contained in this document is subject to change without notice and does not constitute any form of warranty, representation, or undertaking. Nothing herein should in any way be deemed to alter the legal rights and obligations contained in agreements between Interactive Data Corporation and its clients relating to any products or services described herein. Nothing herein is intended to constitute legal, tax or other professional advice. Interactive Data Corporation makes no warranties whatsoever either express or implied, as to merchantability, fitness for a particular purpose, or any other matter. Without limiting the foregoing, Interactive Data Corporation makes no representation or warranty that any data or information (including, but not limited to, evaluations) supplied to or by it are complete or free from errors, omissions, or defects.