

# Market-Q Streaming Widgets

## Market data for corporate websites, web portals and custom applications

Market-Q<sup>SM</sup> widgets are windows from the Market-Q product that can be individually integrated into websites or applications to display market data. These dynamic streaming components can save development time, as well as resources and bandwidth.

The widgets' modular or "componentized" set-up makes it easy to incorporate just one, a few or the entire suite.

We provide a secure single sign-on environment and offer Vendor-of-Record services, so clients can get on with business confident that their end users' information is safe and data use is properly accounted for with the exchanges.

### Who Can Benefit from Market-Q widgets?

- Full service and discount brokerages
- Financial advisors
- Hedge funds
- Back office, including customer relations
- Asset management and private banking

### Key Benefits:

- Modular design for enhanced flexibility
- Cost savings on development and company resources
- Secure single sign-on environment and Vendor-of-Record services to protect your end users' information
- Bandwidth reduction

### Market-Q Widgets Features

Market-Q widgets can be embedded into any application or website. Select one or many:

#### Charts

Interactive, customizable charts that feature a full suite of drawing tools and technical indicators

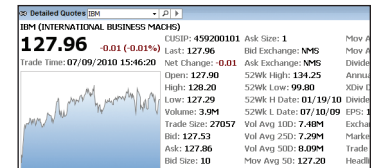


#### Watch List

A window that can be used to create and access multiple symbol lists and display them singly, in multiples or as a portfolio with ability to access relevant data based on asset class

#### Detailed Quote

A window that displays detailed streaming, real-time or delayed information on a symbol, including fundamental data, CUSIP and description; 130+ price aspects



#### News

Streaming, real-time news and search capabilities by service, category, keyword, symbol and time — all in a fully customizable display

Date	Time	Headline
06/28/10	05:00:05 AM	PRESS RELEASE: WSPry and IBM Collaborate to Develop Next
07/07/10	06:21:03 AM	PRESS RELEASE: Vestedbank Selects an IBM System z and Lin
06/29/10	07:00:14 AM	PRESS RELEASE: Sol Mela Teams Up with IBM for IT Managem
06/28/10	09:08:37 AM	PRESS RELEASE: Russian Company Company Transforms Its I
06/28/10	11:03:08 AM	PRESS RELEASE: RTL, Nederland and Insites Consulting Team
06/30/10	11:01:06 PM	PRESS RELEASE: Roche and IBM Collaborate to Develop Hanc
07/02/10	07:00:11 AM	PRESS RELEASE: Report: IBM Supercomputers Are Most Ener
06/23/10	10:04:36 AM	PRESS RELEASE: New IBM Software Framework Helps Financ
07/02/10	07:00:10 AM	PRESS RELEASE: MADE III IBM LABS: IBM Hot Water-Cooled S
07/02/10	07:28:20 AM	PRESS RELEASE: Italy's University of Bari Uses IBM System z C
06/23/10	06:00:03 PM	PRESS RELEASE: IBM, Samsung and GLOBALFOUNDRIES Set H
07/02/10	08:01:28 AM	PRESS RELEASE: IBM to Build Cloud Development and Test En
07/01/10	08:00:14 AM	PRESS RELEASE: IBM to Acquire Bigfix to Advance Smarter DI
07/02/10	13:00:00 AM	PRESS RELEASE: IBM Research and European Union Collabor

#### Time & Sales

Stock trades as they happen, viewed as dynamic time and sales or dynamic time and sales with quotes



#### Quote Ticker

A fully interactive, streaming quote ticker with ability to customize scrolling speed and display settings

#### Headline Ticker

Streaming, real-time news in a fully customizable display with filter capabilities and custom scrolling speeds

#### Hot Lists

Snapshot views of market mover symbols from major U.S. and Canadian exchanges in a customizable display

#### Market Depth

A data display that streams NASDAQ Level II and TotalView, as well as NYSE Open Book, TSX, CME and CBOT

Symbol	Bid	Size	Time	Offer	Size	Time
IBMD	129.58	1	11:41:32	129.60	2	11:41:32
IBCO	129.83	1	11:21:22	130.00	2	08:54:25
IBSQ	127.83	1	06:55:30	126.70	1	11:21:02
IBRQ	126.57	1	06:35:28	131.18	1	08:55:30
AUTO	225.47	1	06:54:26	225.15	1	06:55:07
IBSS	123.00	1	11:40:33	126.33	1	06:40:32
CAIT	122.00	1	06:25:07	126.50	1	11:41:33
IBSH	121.66	1	06:36:48	128.66	1	06:25:21
IBSN	120.86	1	06:40:32	140.00	1	06:29:48
IBRG	118.76	1	06:30:35	150.00	1	06:25:47
IBRD	100.00	1	06:25:47	162.97	1	06:35:28
IBSD	41.94	1	06:15:01	216.07	1	06:25:17
IBRL	1.00	1	06:25:58	500.00	1	06:25:58
JANY	1.01	1	06:25:58	9999.99	1	06:25:58
ADAM	0.0001	1	06:25:41	9999.99	1	06:25:38
COIN	0.0001	1	06:25:38	9999.99	1	06:25:24
DOVS	0.0001	1	06:25:24	9999.99	1	06:25:44
ETHM	0.0001	1	06:25:44	9999.99	1	06:25:34
HAWK	0.0001	1	06:25:34	9999.99	1	06:25:25
OCTG	0.0001	1	06:25:58	9999.99	1	06:25:58
POST	0.0001	1	06:25:58	9999.99	1	06:25:58
STPL	0.0001	1	06:25:40	9999.99	1	06:25:40

#### Forex

Display of significant Forex information in streaming, real-time or delayed format

## Options Chains

A window that streams all the options available for a given stock or future with ability to differentiate by strike price and in-, near- and out-of-the-money with customizable settings. The Black Scholes option model is also available for risk management.

## Additional Features

- Full streaming or snapshot modes available
- Secure single sign-on and vendor-of-record services
- Fully hosted user session; returning user to last view
- Symbol linking and drag and drop between widgets to enhance efficiency
- Ability to pass custom contributed data into Watch List and Detailed Quote widgets

## Backed by a World-Class Network

The fully redundant, fault-tolerant and easily scalable network design features dual network centers, operating in "live / live" mode. The network is supported 24x7 by dedicated employee teams and a sophisticated automated monitoring alert notification system.

## A Name You Can Trust

Interactive Data is an industry leader in providing highly reliable market data with the speed, quality and redundancy needed for mission-critical applications. Real-time hosted services at the desktop and server level are also available. Market-Q widgets are a cost-effective solution, backed by highly skilled support and account management teams.

## About Interactive Data Corporation

Interactive Data Corporation is a trusted leader in financial information. Thousands of financial institutions and active traders, as well as hundreds of software and service providers, subscribe to our fixed income evaluations, reference data, real-time market data, trading infrastructure services, fixed income analytics, desktop solutions and web-based solutions. Interactive Data's offerings can help clients around the world with mission-critical functions, including portfolio valuation,

regulatory compliance, risk management, electronic trading and wealth management. Interactive Data is headquartered in Bedford, Massachusetts and has more than 2,400 employees in offices worldwide.

## Discover the Market-Q Widgets Advantage

Call today to learn more about Market-Q widgets. Or, visit [www.Market-Q.com](http://www.Market-Q.com) for more information.

Amsterdam ■ Bedford ■ Boston ■ Chicago ■ Cologne ■ Dubai ■ Dublin ■ Frankfurt ■ Geneva ■ Glasgow ■ Hayward ■ Helsinki ■ Hong Kong ■ Irvine ■ Jersey, CI  
London ■ Luxembourg ■ Madrid ■ Melbourne ■ Milan ■ Minneapolis ■ New York ■ Paris ■ Rome ■ Santa Monica ■ Singapore ■ Sydney ■ Tokyo ■ Toronto ■ Zurich

### United States

San Francisco: 800.466.9140 • 510.723.1765  
New York: 212.771.6970  
Chicago: 312.706.7771  
email: [DesktopSolutions@interactivedata.com](mailto:DesktopSolutions@interactivedata.com)

### Europe

London: +44 (0)20 7825 8701  
Paris: +33 (0)1 56 69 50 69  
Geneva: +41 22 748 70 40  
email: [EuropeCorpSales@interactivedata.com](mailto:EuropeCorpSales@interactivedata.com)

### Asia/Pacific

Sydney: 800 089 275 • +61 2 8668 1600  
email: [aus-sales@interactivedata.com](mailto:aus-sales@interactivedata.com)  
Singapore: +65 6590 8640  
email: [sgp-sales@interactivedata.com](mailto:sgp-sales@interactivedata.com)

### Limitations

This document is provided for informational purposes only. The information contained in this document is subject to change without notice and does not constitute any form of warranty, representation or undertaking. Nothing herein should in any way be deemed to alter the legal rights and obligations contained in agreements between Interactive Data and its clients relating to any products or services described herein. Nothing herein is intended to constitute investment, legal, tax or other professional advice. Interactive Data makes no warranties whatsoever, either express or implied, as to merchantability, fitness for a particular purpose, or any other matter. Without limiting the foregoing, Interactive Data makes no representation or warranty that any data or information (including, but not limited to, evaluations) supplied to or by it is complete or free from errors, omissions or defects. Products, services or company names mentioned herein are the property of, and may be the service marks or trademarks of, their respective owners.

© 2011 Interactive Data

Market-Q<sup>SM</sup> is a service mark of Interactive Data Corporation.  
Interactive Data<sup>SM</sup> and the Interactive Data logo are trademarks and/or service marks or registered trademarks and/or service marks of Interactive Data Corporation in the United States and/or other countries.

Interactive Data Desktop Solutions (Europe) Limited, a company regulated in the UK by the Financial Services Authority.  
Interactive Data Desktop Solutions is a service of Interactive Data (Australia) Pty Ltd provided under AFSL Licence No. 234689.  
031711

