



# RemotePlus<sup>SM</sup>

RemotePlus<sup>SM</sup> is Interactive Data's financial data server for use with Microsoft<sup>®</sup> Windows<sup>®</sup> and UNIX<sup>®</sup> operating systems.

RemotePlus integrates with your applications, such as Microsoft Excel<sup>®</sup>, and other analytical software. RemotePlus communicates with Interactive Data's host server system, letting you look up and retrieve global financial and research data.

Unlike data services designed to download files or provide terminal access, RemotePlus offers:

- **Ad Hoc Online Access**—Whether you use the RemotePlus software interface with Excel, or integrate RemotePlus into your own Windows-based application, RemotePlus simplifies the look up and retrieval of global securities data into your application.
- **Custom Data Delivery**—When you use the Fixed Format File Generator (FFG) utility (included with RemotePlus) or our Application Programming Interface (API), you can define record formats, scheduled data download times, and security lists.

RemotePlus offers an enormous range of current and historical security information, including current and historical pricing, evaluations, and reference data on more than 6 million securities worldwide.

## ■ Features and Benefits

RemotePlus offers you:

- **Custom Data Delivery at Your Fingertips**—You do not have to wait for a programmer or data vendor to develop or customize a service to meet your unique needs. FFG lets you create or modify the list of data items and/or securities retrieved and set the time of delivery.
- **Textual and Coded Values**—RemotePlus offers coded data (e.g., exchange code “1”) and equivalent textual items (e.g., New York Stock Exchange). Textual items provide the meaning of coded items with the data retrieved.
- **Variety of Identifiers**—Use whatever security identifiers are appropriate - tickers, CUSIP<sup>®</sup> or SEDOL<sup>®</sup> numbers, local codes, and ISINs (as available), or a combination - without multiple requests or special procedures.
- **Use Your Own or Predefined Security Lists**—RemotePlus can access security lists stored on your PC or workstation, letting you upload and analyze portfolios with ease. You can create your own lists using Excel or any text editor, or use one of Interactive Data's predefined lists.
- **Security Lookup**—RemotePlus includes a “lookup” feature that lets you retrieve security identifiers and data item mnemonics from Interactive Data's system.
- **Predefined FFGs**—RemotePlus offers predefined FFG specification files for common applications and reports. You can use them as is or customize them to meet your specific needs.

## ■ Applications

RemotePlus supports a wide range of financial operations, including:

- **Asset Setup**—RemotePlus accesses Interactive Data’s Securities Information Retrieval Service (SIRS<sup>SM</sup>) data to provide you with quality security descriptive data and to assist you in developing and maintaining a central security master file. Refer to the *SIRS: Global Reference Data* collateral for additional information.
- **Investment Research/Statistical Analysis**—RemotePlus supplies financial information to drive research systems. RemotePlus integrates pricing, evaluations, corporate actions, descriptive, and cross-reference data in a single consistent view, simplifying your access and retrieval of financial data within your applications. RemotePlus data is easily integrated into popular graphics, modeling, and statistical analysis software packages.
- **Portfolio Accounting**—RemotePlus supports portfolio pricing with close-of-market pricing of U.S./Canadian equities, fixed income evaluations, dividends/capitalization changes, etc.
- **Trading Support**—RemotePlus supplements your existing market feeds with information such as historical pricing and evaluations, research data, and notification of identifier changes.

## ■ RemotePlus Access Methods

RemotePlus provides several different access methods:

- **Retrieve Data within Microsoft Excel**  
Interactive Data integrates RemotePlus for use with Excel.
- **Retrieve Data for Use in Other Applications**  
The RemotePlus Fixed Format File Generator (FFG) utility for use with Windows or UNIX operating systems, allows you to download data to be used in any application that supports text files, often called “flat files”. FFG is simple to use. You create an input file that describes the data you want using any text editor, and then start FFG to retrieve the data. Data output can be fixed or variable length.

## ■ Application Programming Interface

The RemotePlus Application Programming Interface (API) allows you to build financial data retrieval directly into your existing applications. API is available for use with the Web, UNIX, or Windows based applications.

## ■ RemotePlus Web Site

The RemotePlus Web site gives you direct access to the most up-to-date software, release information, and documentation.

<http://rplus.intdata.com/cgi/nph-wp/index.html>

## ■ Using RemotePlus

The following example illustrates the FTIDData Menu in the RemotePlus interface for use with Excel, and how it handles a data request (Figure 1).

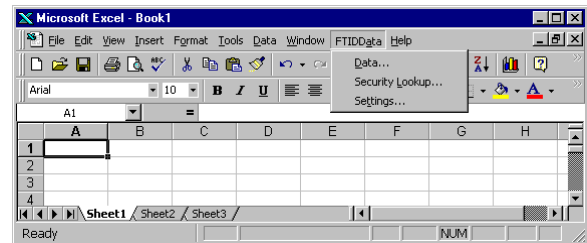


Figure 1

- To retrieve data, click on “Data” on the FTIDData Menu. The FTIDData Request dialog box appears (Figure 2) with fields for security identifiers, data items, and dates. Figure 2 shows a request for the issuer description, latest “best” price/evaluation, latest “best” price/ evaluation date, trading exchange, and price/evaluation type for two securities.

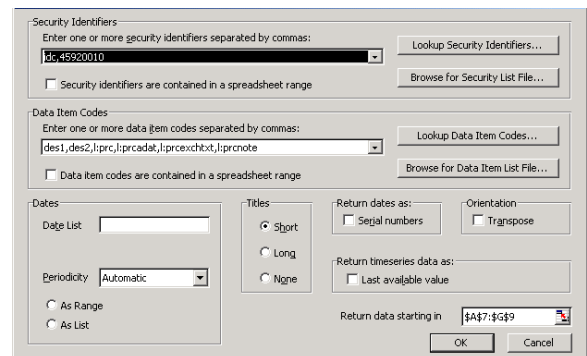


Figure 2

Figure 3 shows the data retrieved for the request in Figure 2.

	A	B	C	D	E	F	G
1	DES1		DES2	L.PRC	L.PRCADAT	L.PRCXCHTXT	L.PRCNOTE
2	IDC	INTERACTIVE DATA CORP	COM	22.46	20090511	U.S. Composite	Trade/Close
3	45920010	INTERNATIONAL BUSINESS MACHS	COM	102.9	20090511	U.S. Composite	Trade/Close

Figure 3

- To find securities and data items, click on the applicable Lookup button (Figure 2). Figure 4 shows Security Lookup for “warrants” with “royal” in the security’s description. To add issues to your Data Request, click on one or more issues and click OK. (Item Lookup works similarly.)

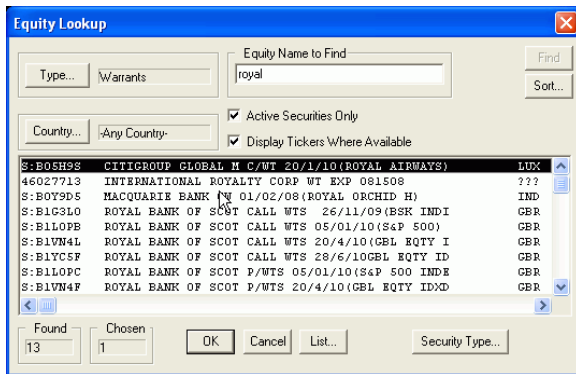


Figure 4

Using FFG, you can also:

- Schedule your data retrieval to start after Interactive Data updates the relevant data on its system
- Wait for a specific time and/or date before starting your data retrieval
- Configure your downloads to run on an unattended batch basis

## Operating Systems/Platforms

RemotePlus supports the following operating systems (specific information is available from your Interactive Data representative):

- Windows 2000 and Windows XP—RemotePlus offers spreadsheet retrieval, graphical lookup of securities, generation of custom flat files, and an application programming interface.

- UNIX—RemotePlus offers generation of custom flat files and an application programming interface for supported UNIX platforms.
- HTTP POST—RemotePlus offers a Web API that can be used to send data requests to the RemotePlus Web server.

## Communications Options

RemotePlus provides a few options for communicating with Interactive Data’s host server system, including:

- Internet—Interactive Data supports direct client access to RemotePlus via the Internet. This can be a good solution for intermittent usage from any organization with a direct connection to the Internet, because it eliminates the need for communications equipment dedicated to RemotePlus.
- Leased Line—for applications involving more intensive usage and higher data volumes, a leased connection to Interactive Data may provide more predictable performance.

## Client Service

Interactive Data is committed to the highest standard of client support. Our product management, sales, and client service staffs concentrate their efforts on meeting client needs through a combination of data and delivery services. Interactive Data provides both local and corporate-level technical support for data and data items, products and services, and data delivery, through a network of sales professionals, centralized client service, and extensive product management, fixed income, equity, and systems personnel.

### About Interactive Data

Interactive Data Corporation (NYSE: IDC) is a leading global provider of financial market data, analytics and related solutions to financial institutions, active traders and individual investors. The Company's businesses supply real-time market data, time-sensitive pricing, evaluations and reference data for millions of securities traded around the world, including hard-to-value instruments. Many of the world's best-known financial service and software companies subscribe to the Company's services in support of their trading, analysis, portfolio management and valuation activities. Interactive Data, headquartered in Bedford, Mass., has approximately 2,400 employees in offices located throughout North America, Europe, Asia and Australia.

Interactive Data's Pricing and Reference Data business provides global securities pricing, evaluations and reference data designed to support financial institutions' and investment funds' pricing activities, securities operations, research and portfolio management.

Interactive Data collects, edits, maintains and delivers data on more than 6 million securities, including daily evaluations for approximately 2.8 million fixed income and international equity issues. Interactive Data specializes in 'hard-to-get' information and evaluates many 'hard-to value' instruments. Pricing, evaluations and reference data are provided in the U.S. through Interactive Data Pricing and Reference Data, Inc. and internationally through Interactive Data (Europe) Ltd. and Interactive Data (Australia) Pty Ltd.

For more information about Interactive Data and its businesses, please visit [www.interactivedata.com](http://www.interactivedata.com).

Amsterdam ■ Bedford ■ Boston ■ Chicago ■ Cologne ■ Dublin ■ Fort Lauderdale ■ Frankfurt ■ Geneva ■ Glasgow ■ Helsinki ■ Hong Kong ■ Houston ■ Jersey, CI  
London ■ Los Angeles ■ Luxembourg ■ Madrid ■ Melbourne ■ Milan ■ New York ■ Paris ■ Rome ■ San Francisco ■ Santa Monica ■ Singapore ■ Sydney ■ Tokyo ■ Zurich

### Interactive Data Pricing and Reference Data, Inc.

32 Crosby Drive  
Bedford, MA 01730  
Tel: 781 687 8800  
Fax: 781 687 8289  
email: [info@interactivedata.com](mailto:info@interactivedata.com)

10 Post Office Square, 8 North  
Boston, Massachusetts 02109  
Tel: 617 426 0400  
Fax: 617 423 2230

100 William Street, 17<sup>th</sup> Floor  
New York, New York 10038  
Tel: 212 269 6300  
Fax: 212 771 6987

2 North LaSalle Street, Suite 1807  
Chicago, Illinois 60602  
Tel: 312 641 1528  
Fax: 312 641 6399

### Limitations

This document is provided for informational purposes only. The information contained in this document is subject to change without notice and does not constitute any form of warranty, representation, or undertaking. Nothing herein should in any way be deemed to alter the legal rights and obligations contained in agreements between Interactive Data Pricing and Reference Data, Inc. and/or affiliates and their clients relating to any of the products or services described herein. Interactive Data Pricing and Reference Data does not provide legal, tax, accounting, or other professional advice. Clients should consult with an attorney, tax, or accounting professional regarding any specific legal, tax, or accounting situation.

Interactive Data Pricing and Reference Data makes no warranties whatsoever, either express or implied, as to merchantability, fitness for a particular purpose, or any other matter. Without limiting the foregoing, Interactive Data Pricing and Reference Data makes no representation or warranty that any data or information (including but not limited to evaluations) supplied to or by it are complete or free from errors, omissions, or defects.

Interactive Data<sup>SM</sup> and the Interactive Data logo are service marks of Interactive Data Corporation. RemotePlus<sup>SM</sup> and SIRS<sup>SM</sup> are service marks of Interactive Data Pricing and Reference Data, Inc. Microsoft<sup>®</sup>, Windows<sup>®</sup>, and Excel<sup>®</sup> are either registered trademarks or trademarks of Microsoft Corporation in the United States and/or other countries. UNIX<sup>®</sup> is a registered trademark of The Open Group in the U.S. and other countries. CUSIP Database provided by the Standard & Poor's CUSIP Service Bureau, a division of the McGraw-Hill Companies, Inc. CUSIP<sup>®</sup> is a registered trademark of the American Bankers Association. Other products, services, or company names mentioned herein are the property of, and may be the service mark or trademark of, their respective owners.